

# MARINE VILLA



## The Art Deco House

### Room Configurations

We are sorry but we are unable to change the bed arrangements with the exception of being able to add cots to most the rooms.

We have available one wooden cot and two additional travel cots. For hygiene reasons, visitors will need to provide their own bedding and sheets for all cots. You may bring additional travel cots with prior approval.

All photos are for help only and may not accurately reflect the way the room will look when you arrive. (it should be even better!!)

### Master Bedroom/Bridal Suite



King Size Bed under a wonderful large Art Deco Round Window and amazing views across the sea.

A chaise longue, for sitting not sleeping

There is a day bed with another single mattress pull out under it, these are short and narrow mattresses best suited to children

Plus plenty of space that provides room for a cot if you must!

The best panoramic sea views from the house and also opens to the upstairs sunroom.

### **Bedroom 2**



A king size bed, Room for a cot. Opens to the upstairs sunroom with panoramic sea views

### **The Family Bedroom (Bedroom 3)**



A King size bed; A single bed with a pull out mattress from underneath that can be lifted to make another double bed. A further single bed.

The second best panoramic sea views from the house and also opens to the upstairs sunroom. This bedroom is possibly the best one in the house...after the master bedroom. Hope you like red!!

### **Bedroom 4**





A king size bed, A Single Bed, Room for a cot, En-suite bathroom. Stunning sea views

### **Bedroom 5**



A little smaller than the other bedrooms, but is a duplex room

A double bed

Side sea view and view to the front of the house

### **Bedroom 6 (Fully accessible, M1 and M2) – Downstairs**





Two single beds with memory foam mattresses

Wheelchair access (private front door) and a wet room (disabled access en-suite shower

M1 and M2 rating

Facing the front of the house, but next to the kitchen for sneaky midnight snacks

### **Morning Room (Optional Bedroom 7, Downstairs)**



Two day beds (both singles), as this room is really a secondary lounge.

Perfect for two adults or teenagers

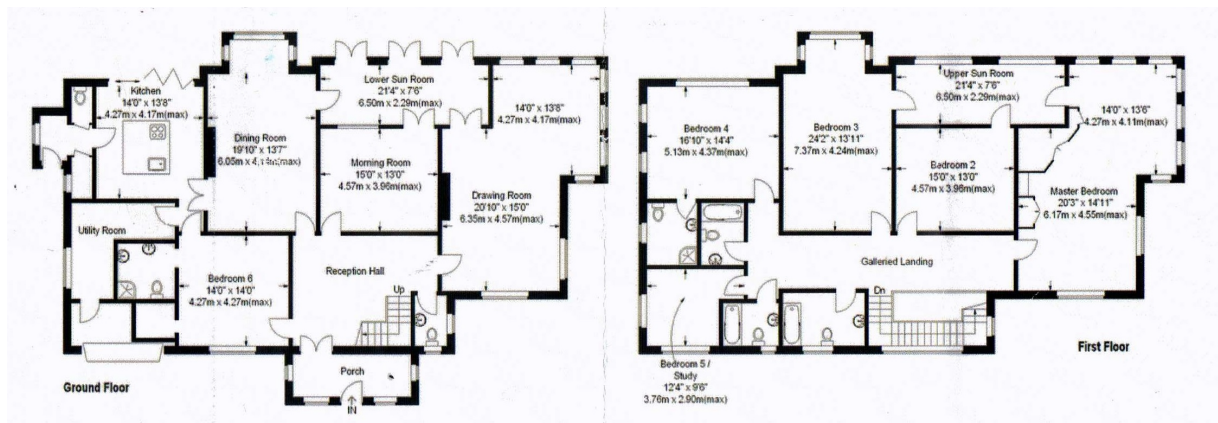
Room for a cot.

Large wooden desk in case you have to work while staying

Opens into the downstairs sun room and lovely garden views



## Floor Plan



Please find us on FACEBOOK

<https://www.facebook.com/MarineVillaArtDeco/>

[TripAdvisor Marine Villa](#)

And our own web site

<https://www.artdecohouseuk.com>

